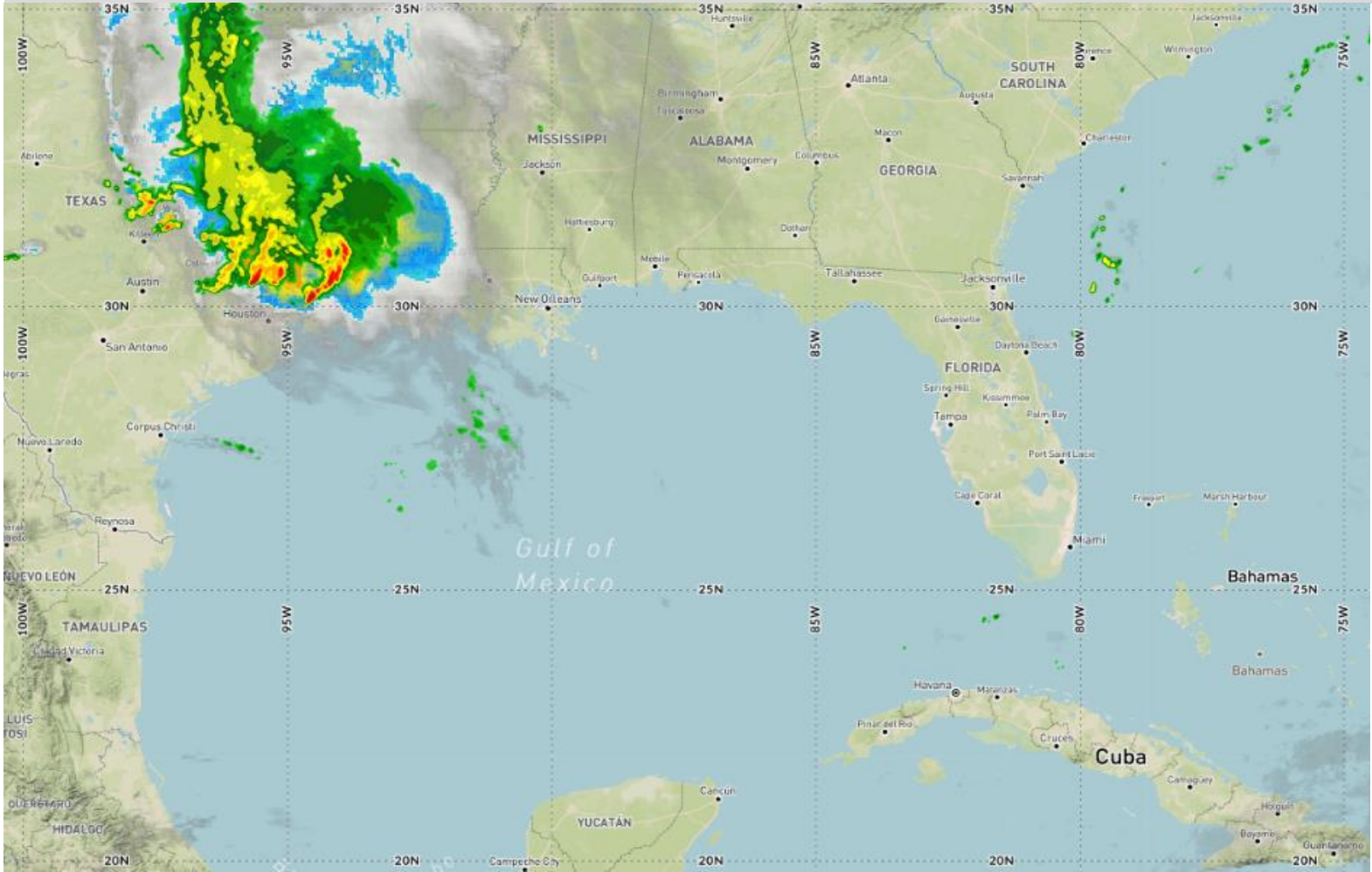


Current Radar and Satellite Data



Today and Tomorrow's Weather

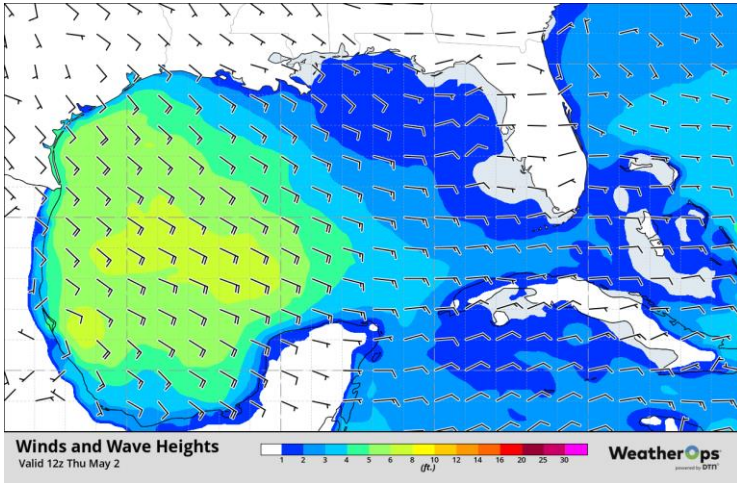
Surface low pressure to the north and a broad high-pressure ridge to the east will continue to facilitate fresh southeasterly trade winds into the Gulf of Mexico today. A few showers and storms may drift into the offshore region later this afternoon and evening however hazardous conditions will be few and far between. Surface low pressure will begin to depart on Friday with a subtle decrease in trade winds. Moderate southeasterly winds alongside moderate seas will persist for another day alongside just a few passing clouds. Minimal changes to the forecast are anticipated over the next few days.

Day Three through Seven Weather Hazards

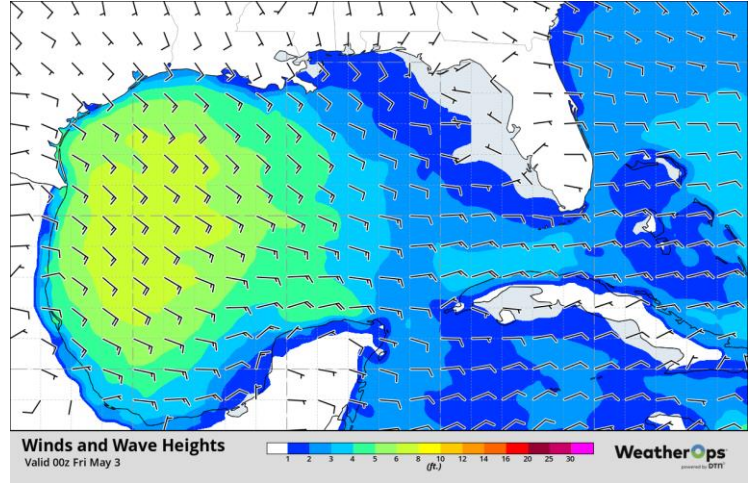
The overall pattern will change little starting this weekend with moderate to fresh southeasterly winds to persist on Saturday and portions of Sunday. Departing low pressure to the north and weakening high pressure ridging across the Atlantic will be the primary driver of these improved conditions with seasonal trades expected to persist, nonetheless. A replay of ongoing conditions is expected to emerge late in the weekend and to start the next week as developing low pressure emerges across the Great Plains and high pressure build off the Eastern Seaboard. Fresh trade winds will persist alongside moderate seas and a distinct lack of notable precipitation. The before mentioned low pressure will remain well to the north keeping forcing for thunderstorms well removed from the Gulf of Mexico. As a result, expect minimal impacts over the next several days.



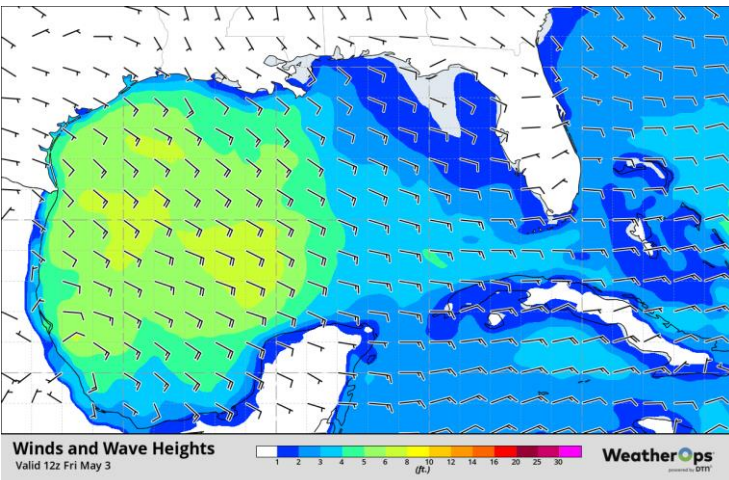
## This Morning's Winds and Seas



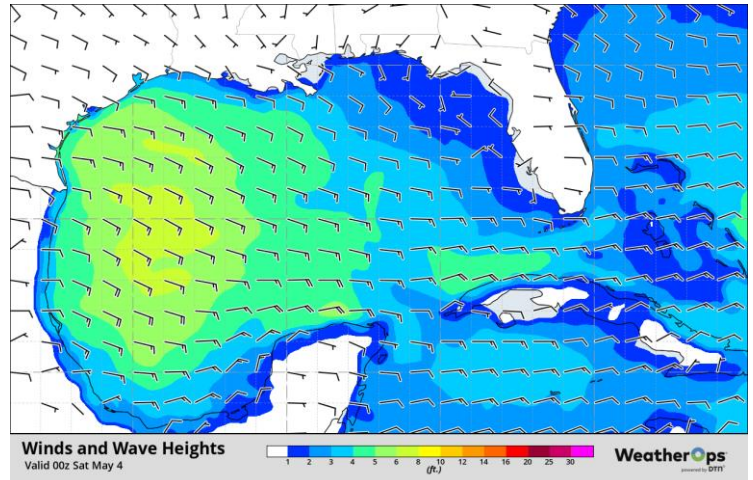
## This Evening's Winds and Seas



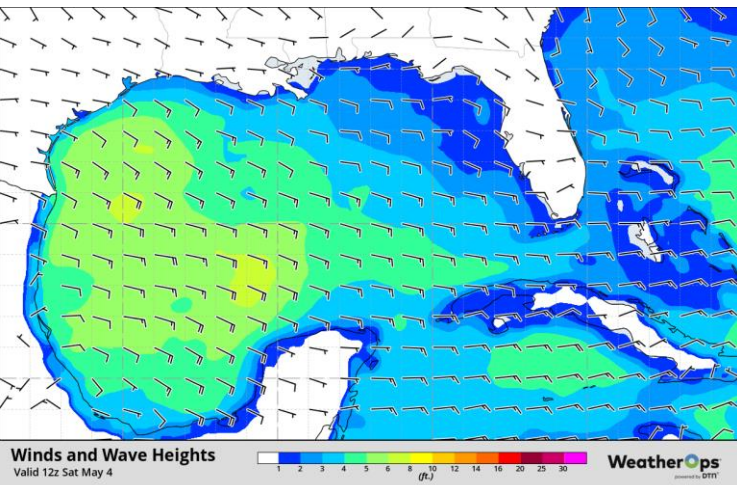
## Tomorrow Morning's Winds and Seas



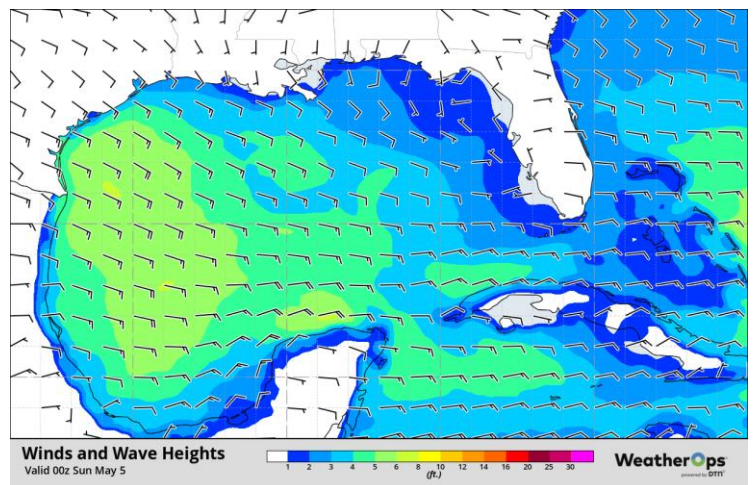
## Tomorrow Evening's Winds and Seas



## Day 3 Morning Winds and Seas

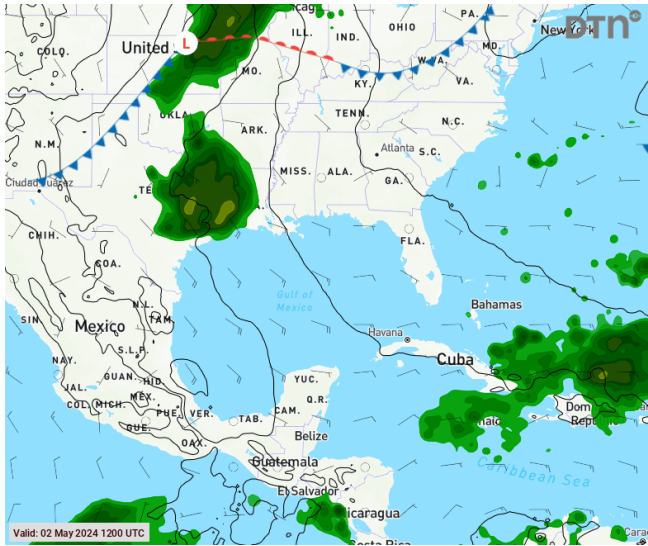


## Day 3 Evening Wind and Seas

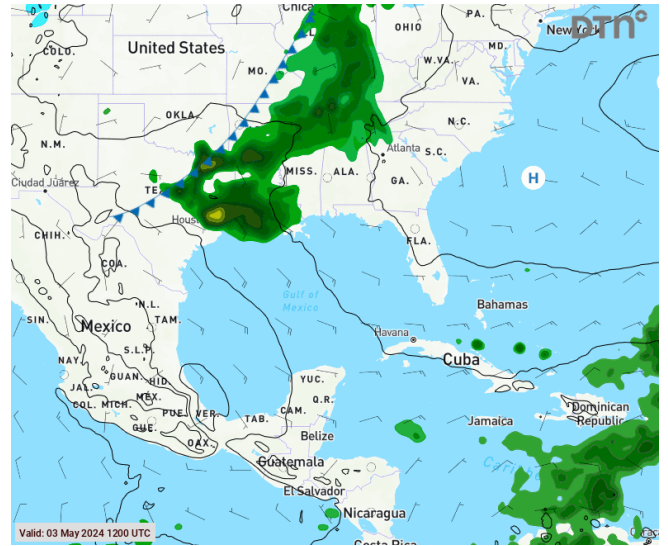




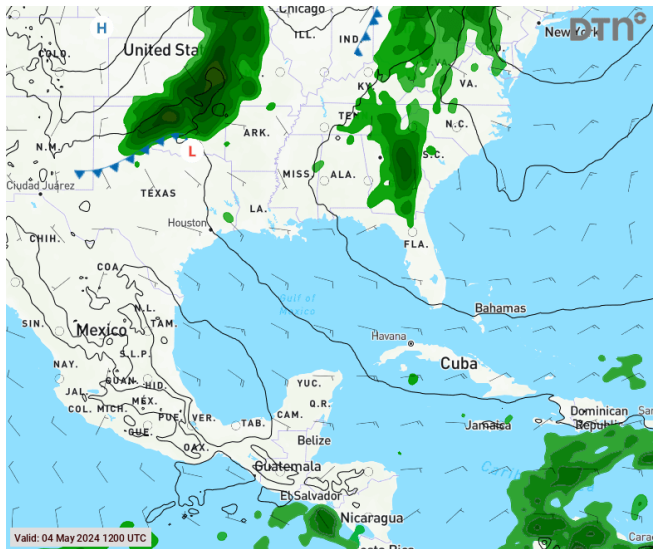
## Day 1 Surface Chart



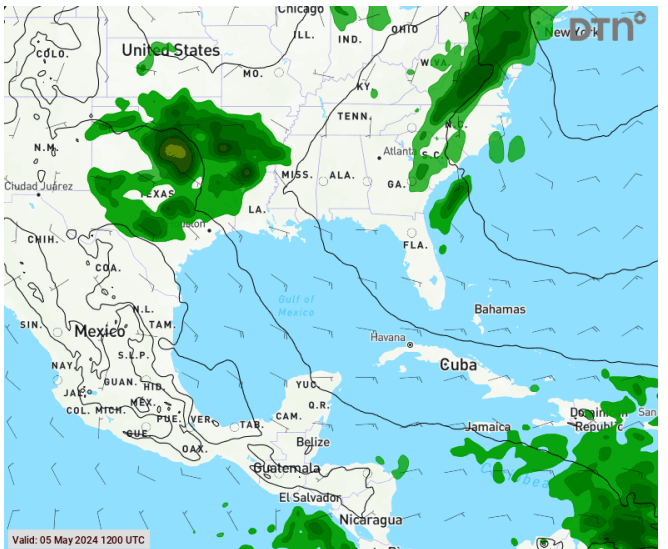
## Day 2 Surface Chart



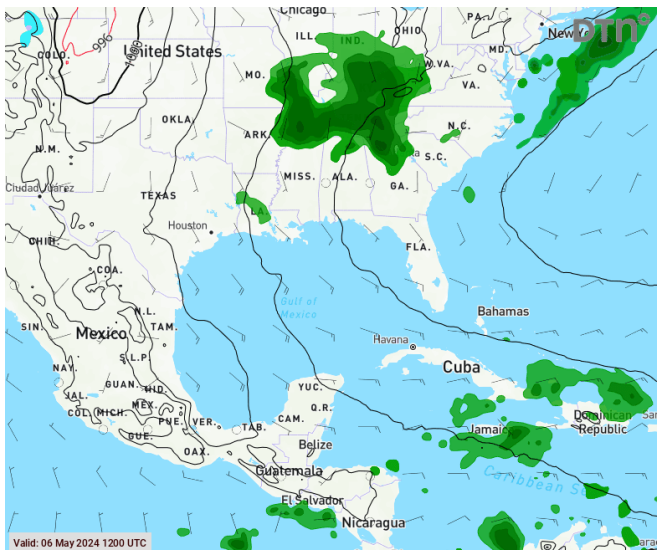
## Day 3 Surface Chart



## Day 4 Surface Chart



## Day 5 Surface Chart



## Day 6 Surface Chart

