

Current Radar and Satellite Data



Today and Tomorrow's Weather

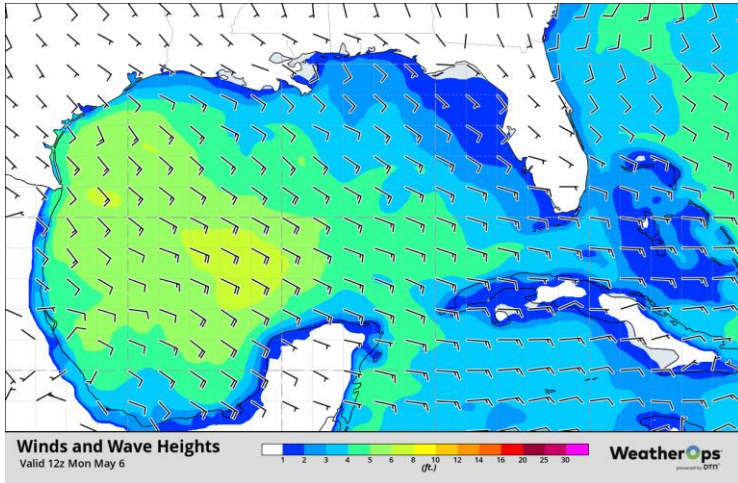
Aside from a few lingering light showers in the north-central/northeastern Gulf early this morning, today and Tuesday should be generally dry as the better forcing for shower and storm activity stays over the U.S. mainland. With high pressure to the east of Florida and low pressure in the far western Gulf, moderate to fresh southeasterly breezes will continue to be the norm over the next couple of days along with moderate seas. Closer to the Florida coast will see light to gentle breezes with smooth and slight seas.

Day Three through Seven Weather Hazards

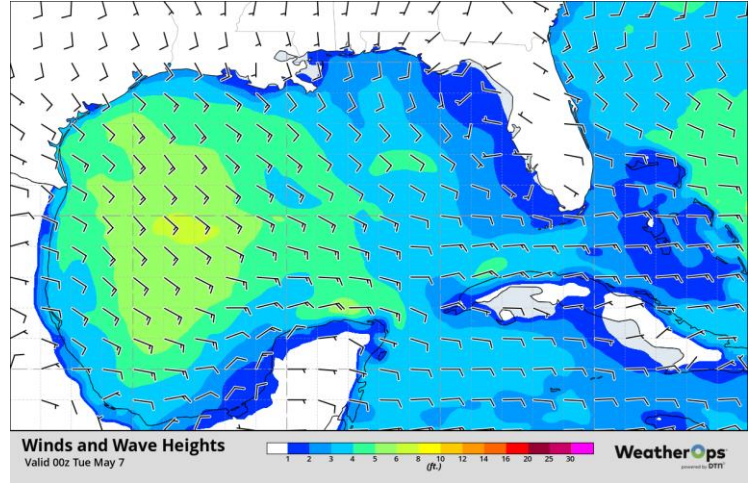
Much of the rest of the week looks largely dry, but some shower and thunderstorm activity may affect the northern Gulf Thursday night into Friday. As the low pressure in the western Gulf shifts eastward slightly into mid-week, winds will become more southerly, remaining in the moderate to fresh breeze range for most, though some occasional lower-end strong breezes cannot be completely ruled out in the central Gulf. Going into Friday, winds will shift to a mores southwesterly direction in the eastern Gulf as a trough swings north of the area, and winds in the western Gulf look to shift more to the southeast as the aforementioned low continues to gradually slide eastward. Moderate to fresh breezes are still anticipated into late week, with possibly some gentle breezes in the northern Gulf on Friday. Generally moderate seas are expected for the latter part of the forecast period, with slight seas near Florida.



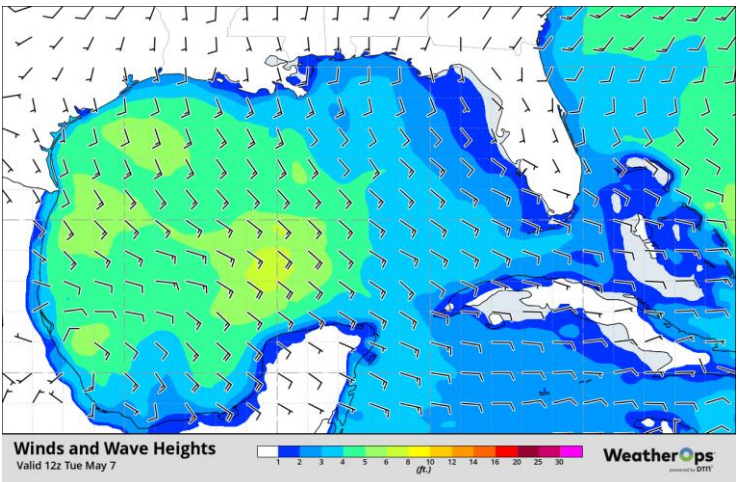
## This Morning's Winds and Seas



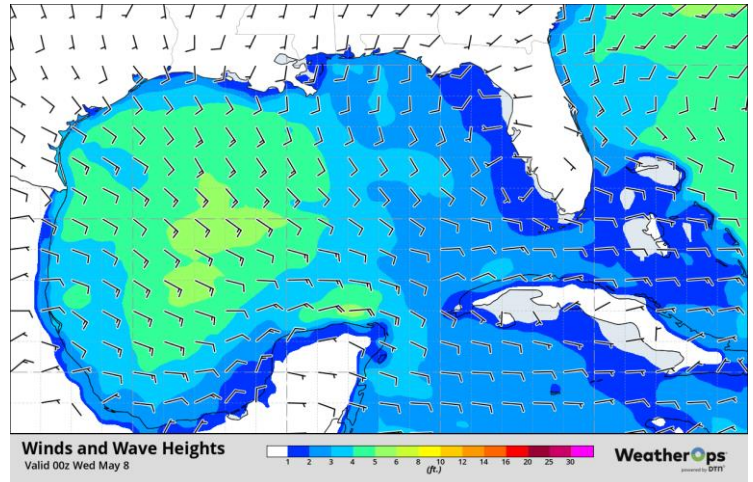
## This Evening's Winds and Seas



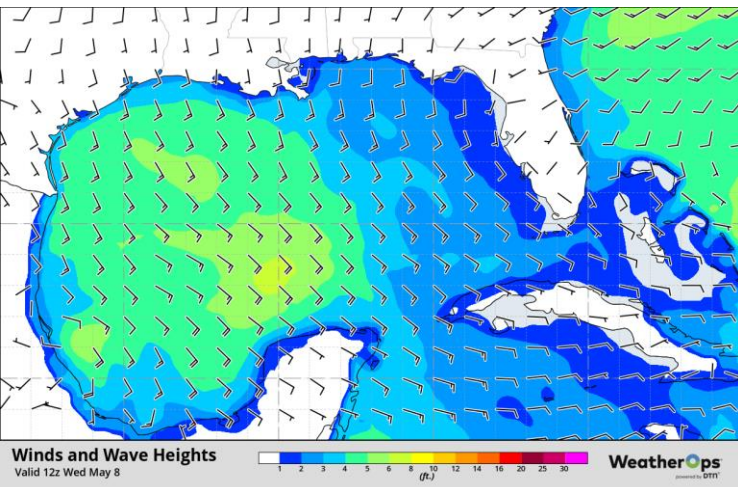
## Tomorrow Morning's Winds and Seas



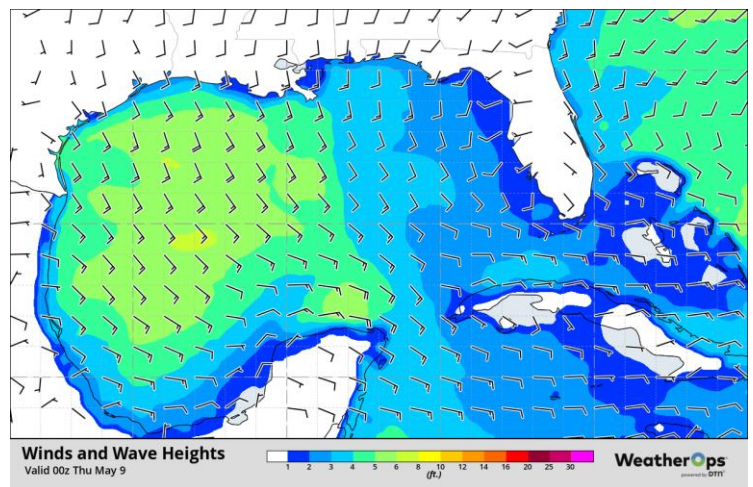
## Tomorrow Evening's Winds and Seas



## Day 3 Morning Winds and Seas

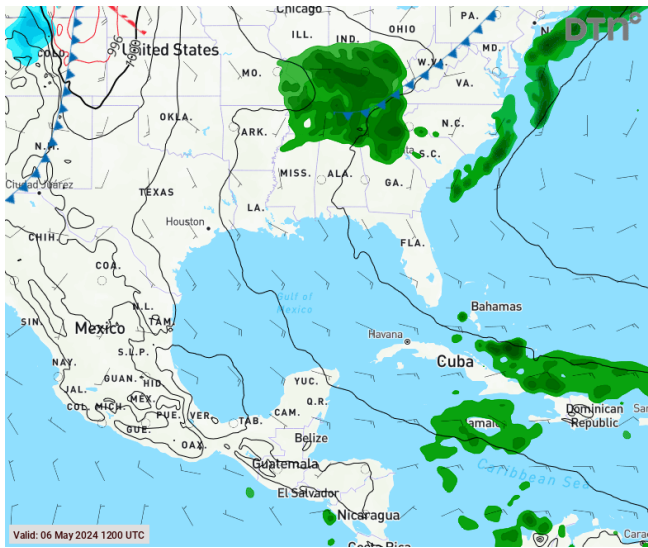


## Day 3 Evening Wind and Seas

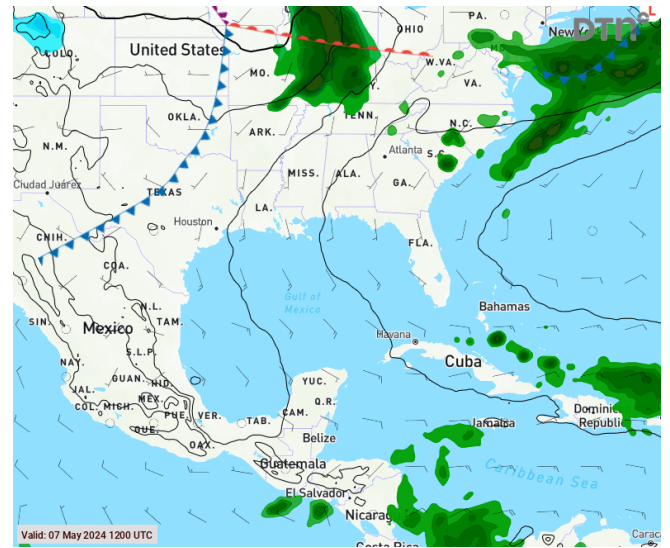




## Day 1 Surface Chart



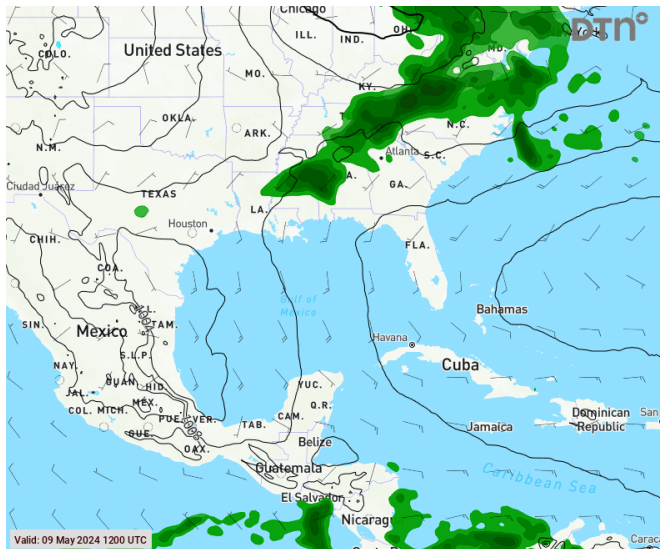
## Day 2 Surface Chart



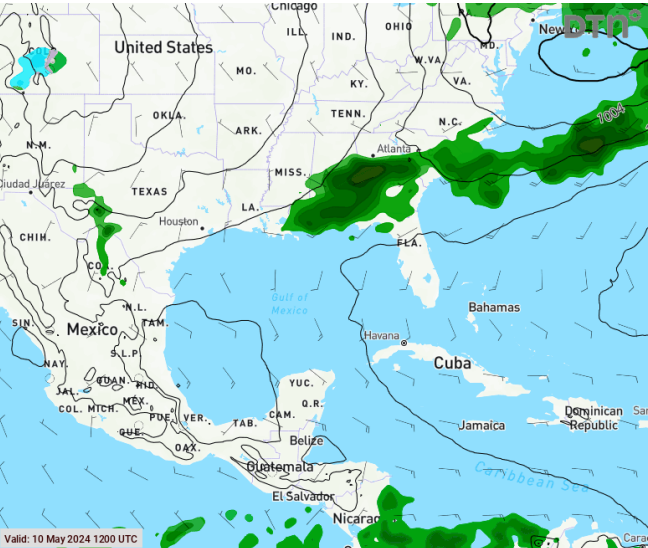
## Day 3 Surface Chart



## Day 4 Surface Chart



## Day 5 Surface Chart



## Day 6 Surface Chart

